

# **CONTROLLED ENVIRONMENT CHAMBER**

## **Model 5532**

The Model 5532 is designed to accommodate equipment and material requiring a precise, stable environment, excellent visibility and a large internal work area (9.4 cu. ft., 266l). The system independently maintains humidity from 10% to 95+% RH and temperature from -22°F to 122°F; (-30 to 50°C) when used in an area maintained at 23°C. Uses include weighing, testing, storage, fabrication and conditioning for consumer product development, biomedical, pharmaceutical, automotive, electronic, electrostatic, DOD, food product analysis, university research and other applications. The Model 5532 is available in 115 and 230 VAC versions.

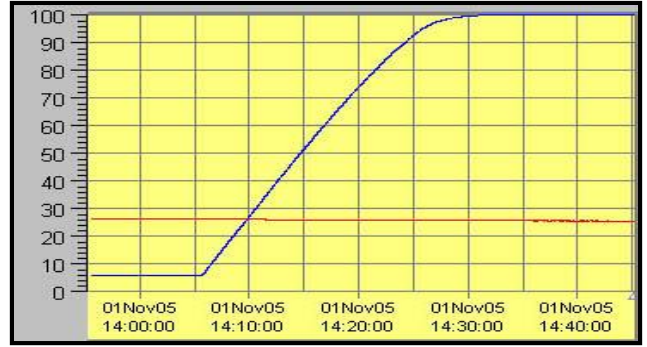
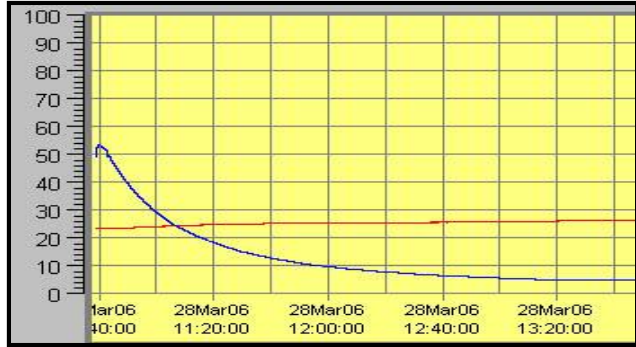
### **Features:**

- Microprocessor PID control**
- Multiple ramp/soak**
- Computer software package**
- Front & side doors**
- 8" Ports with gloves**
- Fluorescent lighting**
- Internal fans and AC power**
- Clear & white acrylic with PS30 welded seams**
- Continuous set point & level displays**
- Thermoelectric cooling & electric heating systems**
- High capacity dehumidification & humidification systems**
- System upgrades & 3<sup>rd</sup> parameter monitoring & control available**



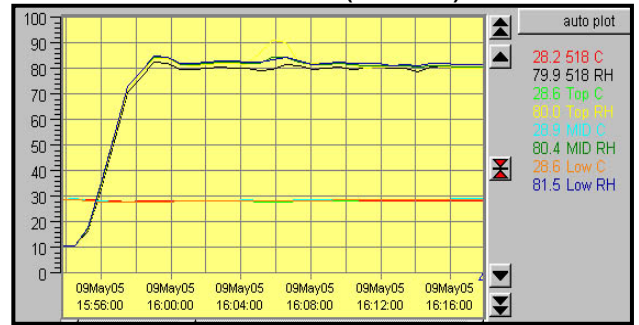
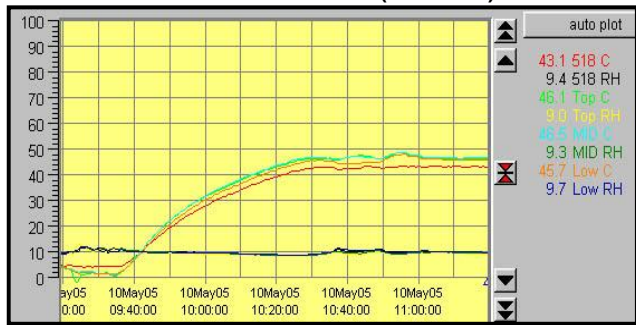
### **Performance Characteristics:**

Equipment and samples placed inside the environment will have an impact on the conditions that can be maintained and the time required to increase or decrease to the set point. Any item that adds heat or humidity to the environment will have an impact on system performance. Chamber performance pertains to the ability of the chamber to reach and then hold a given level along with gradients. It is not only a function of the chamber, but the ambient humidity and temperature, operating systems and controllers used. The following charts show the time typically required to decrease and increase humidity (Blue = RH, Red = T °C) plus humidity gradients in a no-load situation.



Rate of decrease (Blue = RH)

Rate of increase (Blue = RH)



Increase temperature, constant low RH

Increase RH @ 23°C

## Specifications:

### Chamber:

**Dimensions:** 13 cubic feet (368l) external  
 Overall: 52" W x 25.25" D x 22" H (132x64x56cm)  
 Working space: 38.75" W x 20" D x 21" H (98x62x53cm)  
 Full clearance: 35.75" W x 20" D x 18" H (90x51x46cm)  
**Weight:** 130 lbs. (59 kg)  
**Material:** 1/4" & 3/8" (6mm) clear & white acrylic  
**Construction:** PS30 polished welded seams  
 PS30 polished welded seams  
**Doors:** 3/8" (9mm) clear acrylic, 1/2-turn latches  
 Sample Door Left Side: 14" x 4" (35 x 10 cm)  
 Equipment Door Front: 32" x 14" (81 x 35 cm)  
**Seal:** 1/4" (6mm) Poron, non-setting gasket

### Operating Range:

Controlled Humidity: 10 to 95+% at 23°C  
 Controlled Temp: 64-122°F (18-50°C) at 23°C

### Controllers:

Two (2) CAL 9500, multiple ramp/soak cycles  
 Optional 3<sup>rd</sup> parameter, linear input

**Resolution:** 0.1%/0.1°

**Display:** °F or °C selectable

**Rec. Out:** Humidity: 0-1VDC (0 to 100% RH)  
 Temperature: 0-1VDC (-40 to 60°C)

### Computer Interface:

MODBUS pro. via RS485-PC (Serial or USB)  
 with W98, XP, W7Pro (No function with W7 Home)  
 Cal Graphix SW with communication boards and interface

### RH/Temp Sensor:

Accuracy

RH: ±2.0% RH at 68°F (20°C) and 0-90% RH :  
 ±3.0% RH at 68°F (20°C) and 90-100% RH

Temp: ±0.4° F (±0.2° C) at 20°C

**Lighting:** 18W sealed fluorescent, ON/OFF switch

(Light extends 3" down from top of chamber.)

**Gloves:** 8" (0.5mm) ports, replaceable hands,

natural rubber, accordion sleeves standard, 2 extra sets of hands

**Optional:** Iris Ports, No Ports

**Fans:** 2x110 cfm (6230 l/min), ON/OFF/ADJ; integrated heater assembly

### Ports on Right-Hand Side:

Qty: 2x1/4" (6mm) Quick Connect (Dehumidification)

Qty: 1x1" (25.4mm) Hose Barb (Humidification)

### Port on Left-Hand Side:

1x1.5" (31.4mm) Cable pass through

### Power:

Voltage: 115/230VAC, 50/60Hz

Current: 8 Amps/4 Amps

**Shipping:** Chamber: 63" x 36" x 33" 190-lbs.

Accessories: 22" x 22" x 14" 27-lbs

### Operating Systems:

**Dehumidify:** Desiccant/Pump

2.5 lb. (1.1kg) CaSO<sub>4</sub>, 0.71cfm (120 l/min)

5 lb. Jar of Renewable Indicating Desiccant

**Humidify:** Built in Single Head Ultrasonic

Capacity: 5 gallon (19 l) ext. tank or direct hookup.

Humidifier pump flow rate 0.71cfm (120 l/min)

Drip Tray & CE on 230VAC option

**Heat:** Electric, 500W, Integrated Heater assembly with protection switch  
 (Mounted internally on rear wall of chamber)

**Cool:** 150W Thermoelectric (Std.) 510 BTU, 300W (Opt.)

2

**Warranty:** One (1) year