

## SERIES VD

### Voltage Dividers

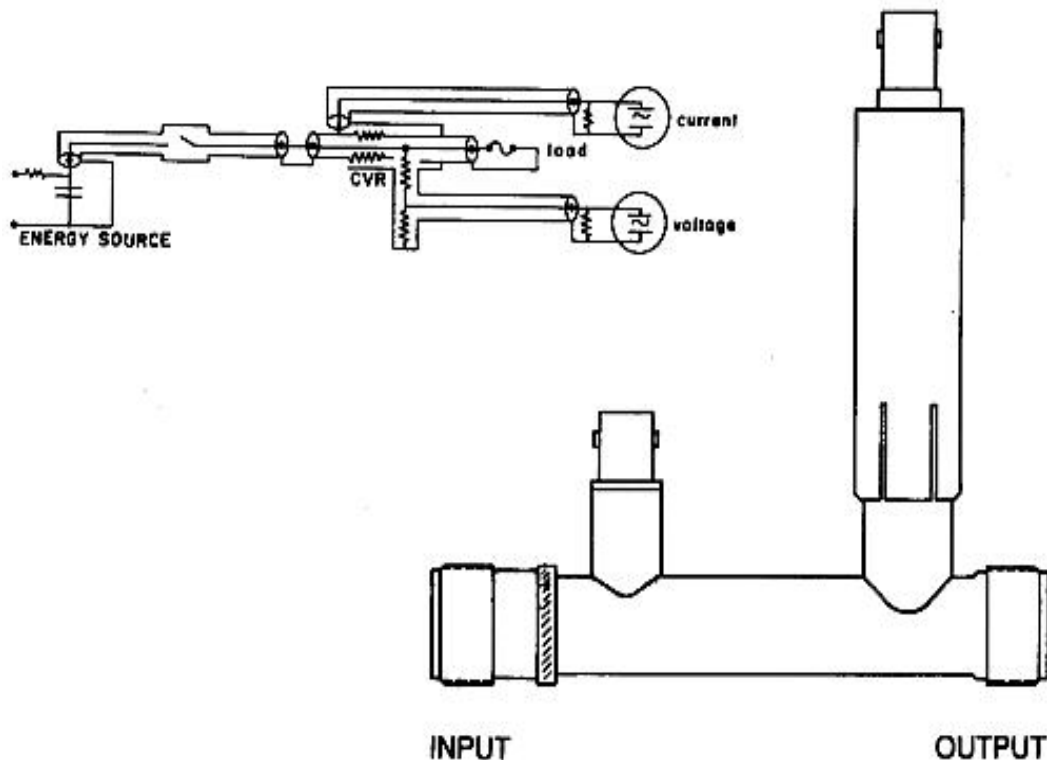
### DESCRIPTION

These voltage dividers are designed to be used with our Series VL. These can also be ordered with a type 'N' connector.

### SPECIFICATIONS

Nominal risetime - 3 nanosecond, maximum energy 100 joules. Bandpass - 100 MHz. Standard voltage divider ratios in 50-ohm systems - 5:1, 10:1, 20:1, 50:1, 100:1, 200:1, 500:1, 1000:1.

Maximum peak input voltage - 10 Kilovolts. Maximum wattage - 5 watts. Special ratios and impedance options available. Standard voltage divider tolerance + or - 4%. Each unit labeled with exact ratio value accurate to + or - 1%.



### ORDERING INFORMATION

When ordering specify series, Input and output connections, model, voltage divider ratio and signal output connector. Example: VLR31MF-1-05-BNC, VD100:1; L - Series L ;R31MF - input and output connectors (Reynolds 31, male & Female); 1-05 - Model(Series A, A-01-05); BNC - Output signal connector; VD100:1 - Voltage Divider ratio 100:1.

Weitere Informationen, Beratung, Verkauf und technische Betreuung:

**mem** Messtechnik & Elektronik GmbH Pilartzstr. 9 83549 Eiselfing  
Telefon: 08071 923060 FAX: 08071 9230619 [mail@mem-gmbh.de](mailto:mail@mem-gmbh.de) [www.mem-gmbh.de](http://www.mem-gmbh.de)