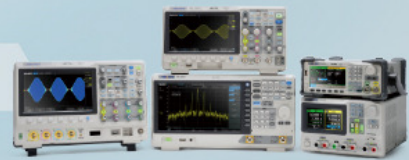


The Best Value in Electronic Test & Measurement



SPD3303X / SPD3303X-E Series Programmable DC Power Supply



Product Overview

Siglent's SPD3000X Series Programmable Linear DC Power Supply has a 4.3 inch TFT-LCD display, supports Remote Programming and has a Real Time Wave Display. The '3000X family has three isolated outputs; two adjustable channels and one selectable channel from 2.5v, 3.3V, and 5V. It also has output short and overload protection and can be used in production and development.

Key Features

- ◆ 3 independently controlled and isolated outputs: 32V/3.2A×2, 2.5V/3.3V/5V/3.2A×1, total 220W
- ◆ 5 digits Voltage, 4 digits Current Display, Minimum Resolution: 1mV/1mA (SPD3303X)
- ◆ Supports front panel timing output functions
- ◆ 4.3 inch true color TFT- LCD 480x272 display
- ◆ 3 types of output modes: independent, series, parallel
- ◆ 100V/120V/220V/230V compatible design to meet the needs of different power grids.
- ◆ Intelligent temperature-controlled fan, effectively reduces noise
- ◆ Clear graphical interface, with waveform display function
- ◆ Five internal groups of system parameter save/recall, supports data storage space expansion
- ◆ Provides PC software; Easypower, supports SCPI, LabView drive

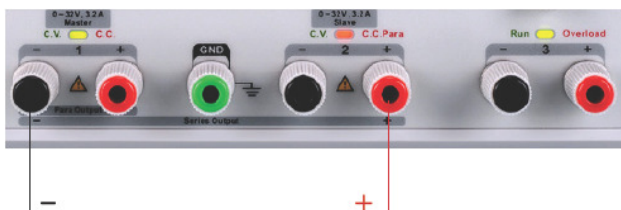
Characteristics

High-resolution / high-precision output

The highest resolution of 1mV/1mA (SPD3303X), provides excellent setting and read back accuracy. This ensures accurate output even with very small changes in voltage or current. This is impossible with a low resolution power supply.

Series/parallel/independent mode functions

Series and parallel functions allows for combining two channels into one output with more power output capability, extending the application range. Each of 3 channels power can be turned on or off independently and also can be turned all on or all off.



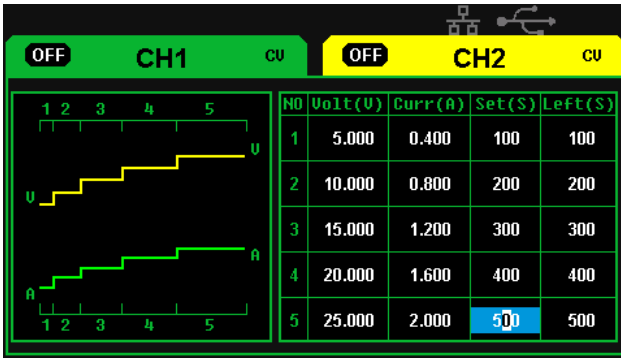
Series output mode



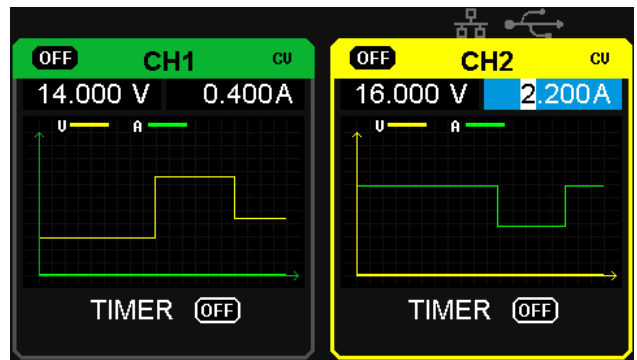
Parallel output mode

Panel displays the timing output

Through front panel operation, five groups of timing settings and output control can be displayed, which provides users with simple power programming functionality. Also, by connection to Siglent's EasyPower PC software, a full range of communication and control features can be used.



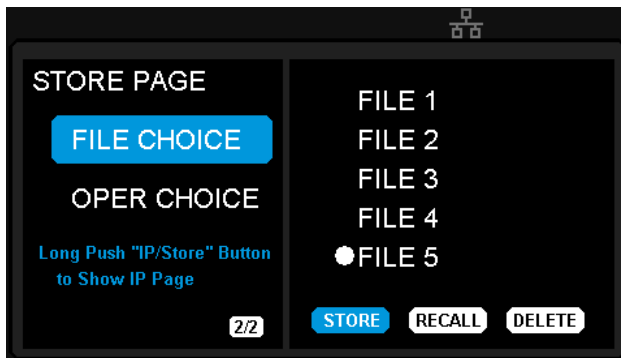
Panel timing output



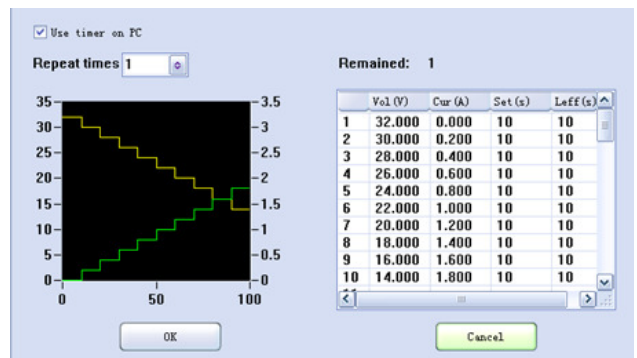
Real time wave display

Save/Recall setting parameters

The SPD3000X series programmable power supply can save or recall 5 groups of setting parameters in internal storage and also supports external storage expansion. Settings can be easily recalled if needed.

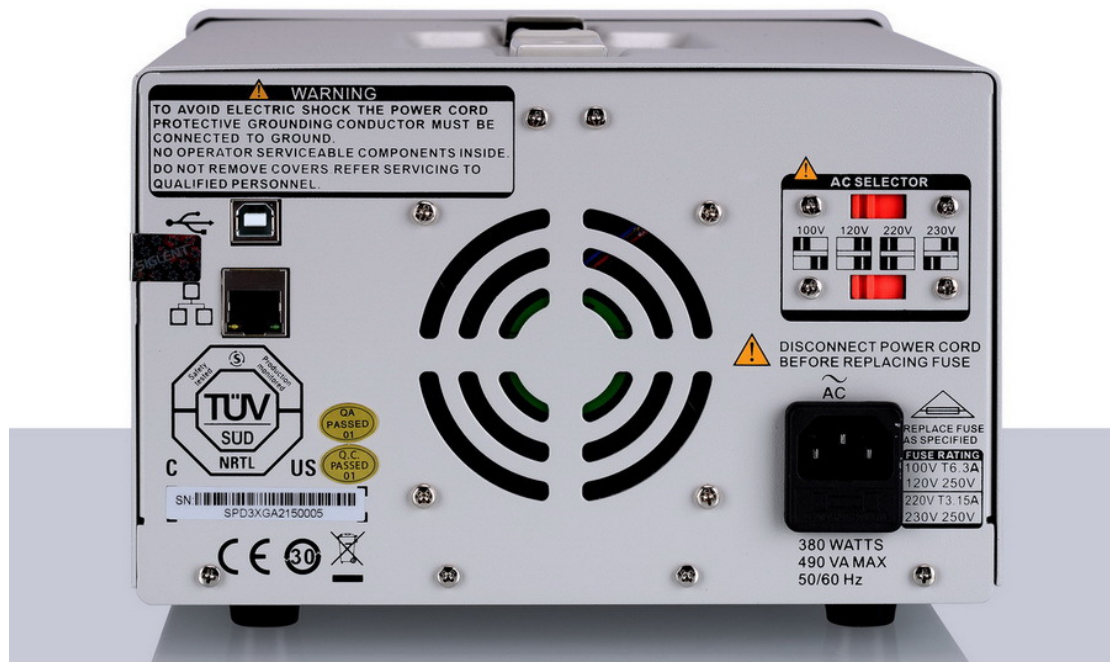


Internal Storage



PC Timer

Rear Panel



Ordering Information

Product Model

SPD3303X, 3 channels independent output, min resolution 1mV / 1mA, USB Device & LAN, 4.3 inch LCD display

SPD3303X-E, 3 channels independent output, min resolution 10mV / 10mA, USB Device & LAN, 4.3 inch LCD display

Standard Accessories

USB Cable -1

Quick Start -1



Product Certificate -1

Calibration Certificate -1

Power cord -1

Output Test Cord -2 Sets

Resources CD (product document and software) -1

Model	Channel output	Display	Resolution	Setting accuracy	Readback accuracy
 SPD3303X	CH1: output voltage 0~32V output current 0~3.2A CH2: output voltage 0~32V output current 0~3.2A CH3: output voltage 2.5/3.3/5.0V output current 0~3.2A	4.3" color TFT-LCD 5 digits voltage display, 4 digits current display	1mV,1mA	voltage: $\pm(0.03\% \text{ of reading}+10\text{mV})$; current: $\pm(0.3\% \text{ of reading}+10\text{mA})$	voltage $\pm(0.03\% \text{ of reading}+10\text{mV})$; current $\pm(0.3\% \text{ of reading}+10\text{mA})$.
 SPD3303X-E	CH1: output voltage 0~32V output current 0~3.2A CH2: output voltage 0~32V output current 0~3.2A CH3: output voltage 2.5/3.3/5.0V output current 0~3.2A	4.3" color TFT-LCD 4 digits voltage display, 3 digits current display	10mV,10mA	voltage: $\pm(0.03\% \text{ of reading}+10\text{mV})$; current: $\pm(0.3\% \text{ of reading}+10\text{mA})$	voltage $\pm(0.03\% \text{ of reading}+10\text{mV})$; current $\pm(0.3\% \text{ of reading}+10\text{mA})$.

Verkauf und technische Betreuung

mem

Messtechnik & Elektronik GmbH
 Pilartzstr. 9 D-83549 Eiselfing

Telefon: 08071 923060
 mail@mem-gmbh.de

FAX: 08071 9230619
 www.mem-gmbh.de